

Probe Rotor

Industrial Rotor IRT-1500

Description

The TMT industrial rotor IRT-1500 is designed for the inspection of boreholes, tubes ends, etc in the production line. This robust rotor has low distortion / low noise by inductive signal transmission without slip rings.

In combination with the eddyMax® Inline eddy current instrument sophisticated data evaluation is possible.

Technical Data

- * **Frequency Ranges**
 - 1 kHz to 50 kHz
 - 10 kHz to 200 kHz
 - 100 kHz to 600 kHz
- * **Revolution Speed**
 - ~ 1500 rpm
- * **Probe Connector**
 - Fischer Series 102 / 4 pins
 - Probe shaft diameter 8^{H7}mm
- * **Cable Connector**
 - Souriau Series 851, Size 14-15
- * **Motor Voltage**
 - 12V
- * **Dimensions**
 - 80 x 238 mm (DxL)
- * **Weight**
 - ~ 1.6 kg

Accessories

- * speed controller
- * cable
- * probes



Probe Rotor

Hand Rotor SRT-1500

Description

The TMT hand rotor SRT-1500 is designed for the inspection of boreholes, tubes ends, etc under field conditions . This light weight hand held version has low distortion / low noise by inductive signal transmission without slip rings.

In combination with the eddyMax® eddy current instruments sophisticated data evaluation and data processing is possible. The rotor can be extended with an axial encoder to perform 2-dimensional color scans

Technical Data

- * **Frequency Ranges**
 - 1 kHz to 50 kHz
 - 10 kHz to 200 kHz
 - 100 kHz to 600 kHz
- * **Revolution Speed**
 - ~ 1445 rpm / 96 mNm
 - ~ 804 rpm / 165 mNm
 - ~ 453 rpm / 275 mNm
 - ~ 254 rpm / 495 mNm
- * **Probe Connector**
 - Fischer Series 102 / 4 pins
 - Probe shaft diameter 8^{H7} mm
- * **Cable Connector**
 - Fischer Series 108 / 8 pins
- * **Motor Voltage**
 - 12V
- * **Dimensions**
 - 150 x 38 x 62 mm (LxWxH)
- * **Weight**
 - ~ 550 g

Accessories

- * cable
- * axial encoder
- * probes



Probe Rotor

Internal Tube Rotor RB-18

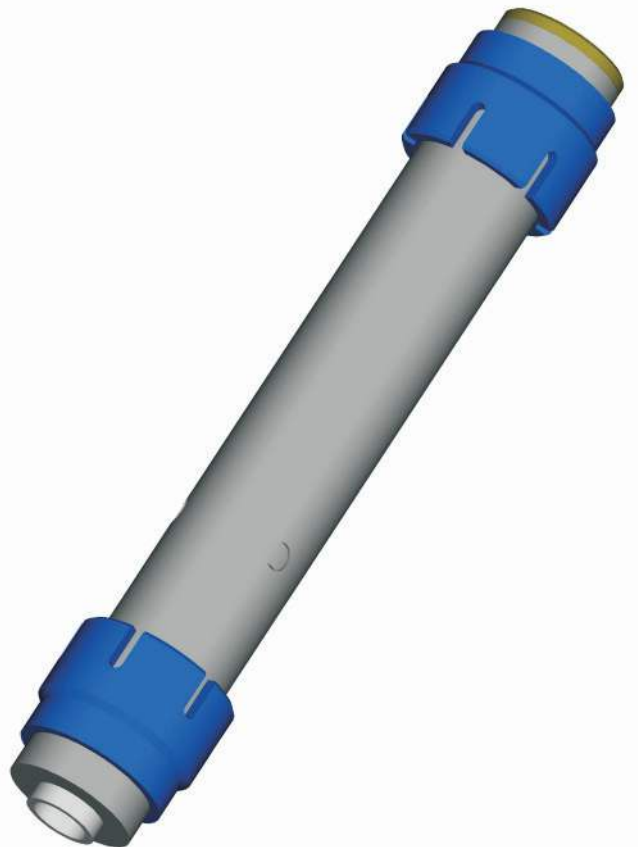
Description

The TMT internal tube rotor RB-18 is designed for the inspection of tubes and long boreholes. It can be pushed into the tube and retracted with the probe cable. By the exchange centerings the rotor can be adapted to different tube diameter. The RB-18 is an optimal tool to detect defects like cracks, weld defects, etc in long tubes.

In combination with the eddyMax[®] eddy current instruments and HPP-2.V3 probe push puller system sophisticated data evaluation and data processing like generation of color scans is possible.

Technical Data

- * **Frequency Ranges**
 - 1 kHz to 50 kHz
 - 10 kHz to 200 kHz
 - 100 kHz to 600 kHz
- * **Revolution Speed**
 - ~ 1210 rpm / 9.9 mNm
 - ~ 395 rpm / 26.5 mNm
 - ~ 257 rpm / 41.0 mNm
- * **Probe Connector**
 - Fischer Series 102 / 4 pins
 - Probe shaft diameter 8^{H7} mm
- * **Cable Connector**
 - Fischer Series 108 / 8 pins
- * **Motor Voltage**
 - 12V
- * **Dimensions**
 - 18 x 125 mm (Dia x L)
- * **Weight**
 - ~ 150 g



Accessories

- * cable
- * exchangeable centerings
- * probes

Probe Rotor with Axial Encoder **TMT.**

Test Maschinen Technik

Description

The TMT hand rotor SRT-1500W is designed for the inspection of boreholes, tubes ends, etc under field conditions. This light weight hand held version has low distortion / low noise by inductive signal transmission without slip rings. By the fixed encoder a quick and easy distance proportional C-scan of the inspected borehole can be performed.

In combination with the eddyMax[®] eddy current instruments sophisticated data evaluation and direct conversion to color graphic is made.

Technical Data

- * **Frequency Ranges**
 - 1 kHz to 50 kHz
 - 10 kHz to 200 kHz
 - 100 kHz to 600 kHz
- * **Revolution Speed**
 - ~ 1445 rpm / 96 mNm
 - ~ 804 rpm / 165 mNm
 - ~ 453 rpm / 275 mNm
 - ~ 254 rpm / 495 mNm
- * **Probe Connector**
 - Fischer Series 102 / 4 pins
 - Probe shaft diameter 8^{H7} mm
- * **Cable Connector**
 - Fischer Series 108 / 8 pins
- * **Axial Encoder Working Lengthes**
 - 25mm
 - 50mm
 - 100mm
- * **Motor Voltage**
 - 12V
- * **Dimensions**
 - 150 x 38 x 62 mm (LxWxH)
- * **Weight**
 - ~ 550 g

Accessories

- * cable
- * probes

